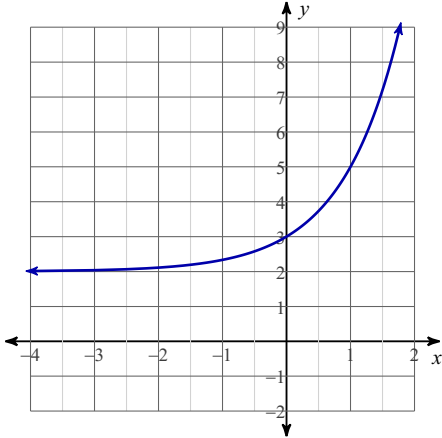


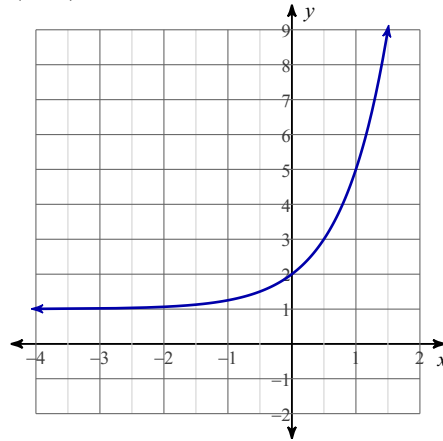
SM3-A HW #1-8 (Graph the Exponential Function)

Period _____

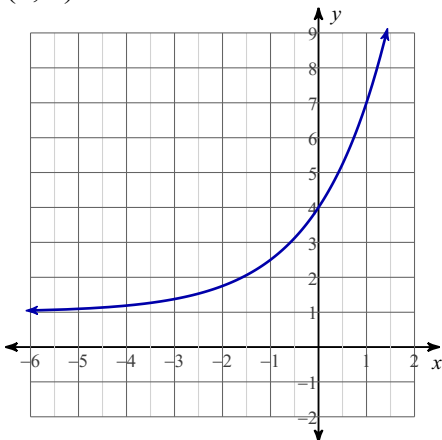
- 1) Write the equation for the graph. The graph passes through the ordered pairs (0, 3) and (1, 5). Start the with transformation equation: $y = ab^x + k$ and SHOW ALL STEPS you used to obtain the equation.



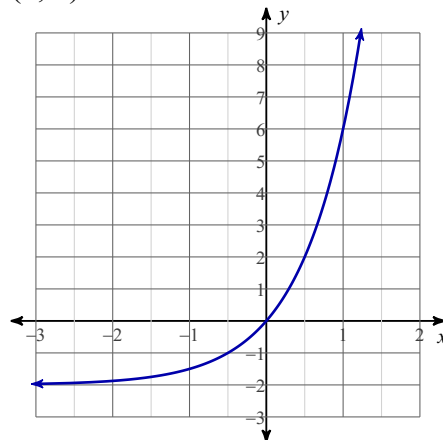
- 2) Write the equation for the graph. The graph passes through the ordered pairs (0, 2) and (1, 5)



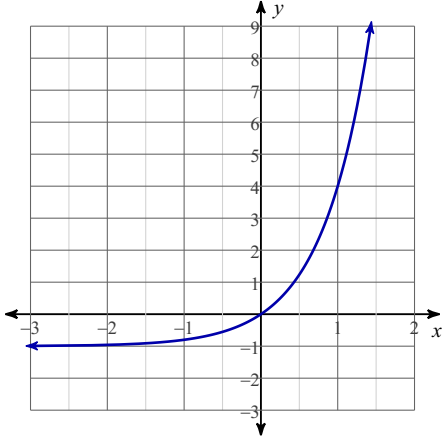
- 3) Write the equation for the graph. The graph passes through the ordered pairs (0, 4) and (1, 7)



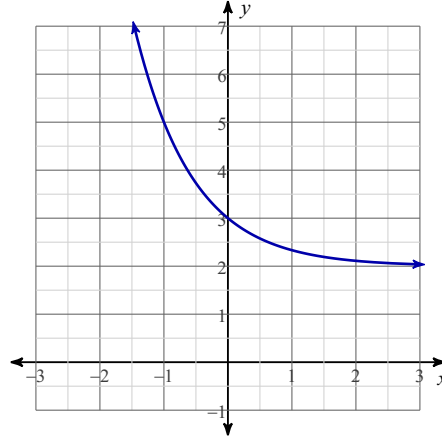
- 4) Write the equation for the graph. The graph passes through the ordered pairs (0, 0) and (1, 6)



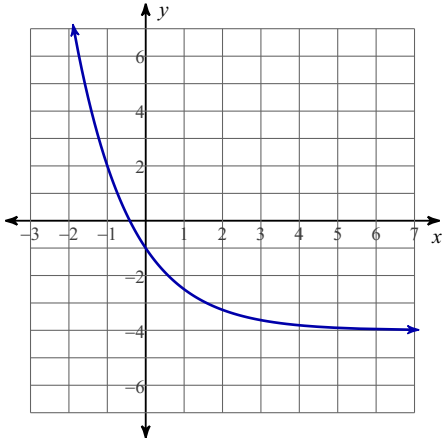
- 5) Write the equation for the graph. The graph passes through the ordered pairs $(0, 0)$ and $(1, 4)$



- 6) Write the equation for the graph. The graph passes through the ordered pairs $(0, 3)$ and $(-1, 5)$



- 7) Write the equation for the graph. The graph passes through the ordered pairs $(0, -1)$ and $(-1, 2)$



- 8) Write the equation for the graph. The graph passes through the ordered pairs $(0, 1)$ and $(-1, 10)$

