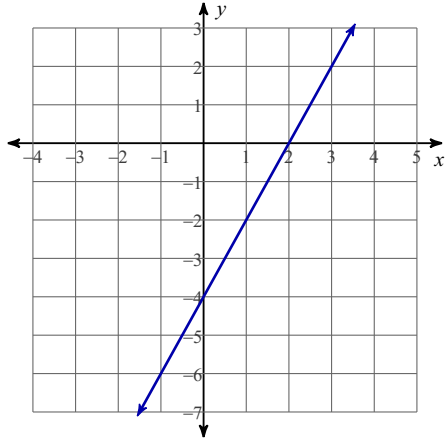
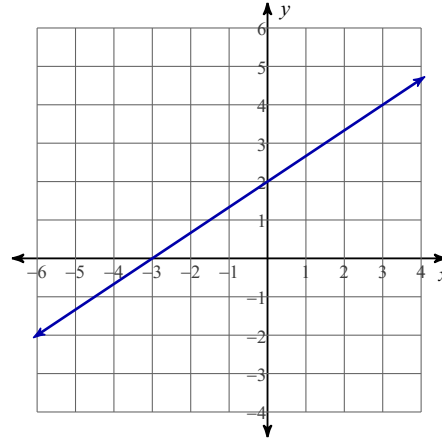


SM3-A (In Class Review)

- 1) Write the equation of the line (in "slope-intercept" form) that has been graphed:



- 2) Write the equation of the line (in "slope-intercept" form) that has been graphed:



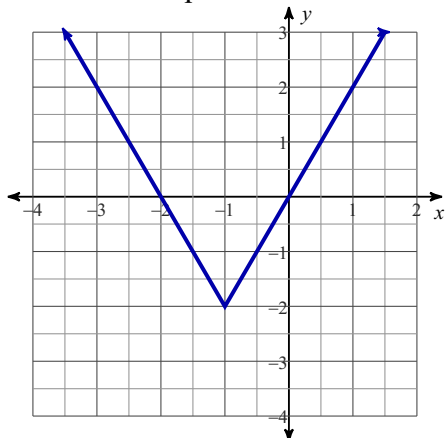
- 3) Write the equation of a line that passes through the following two x-y pairs:

(2, -4) and (-5, 10)

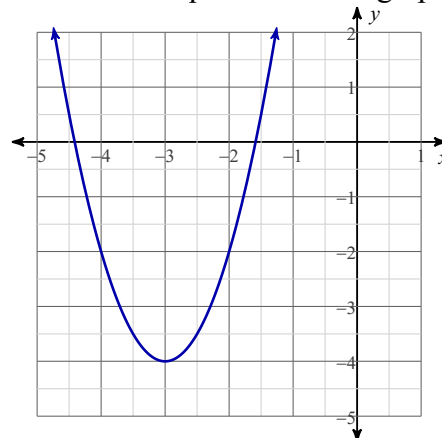
- 4) Write the equation of a line that passes through the following two x-y pairs:

(0, -2) and (3, 13)

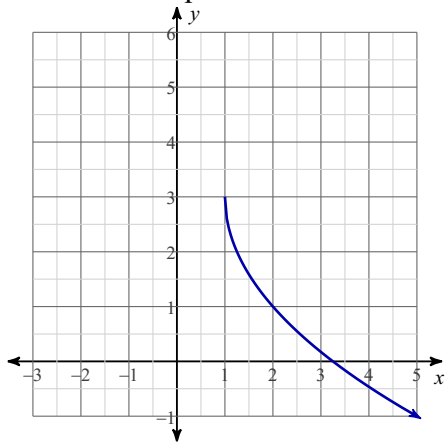
- 5) What is the equation that has been graphed?



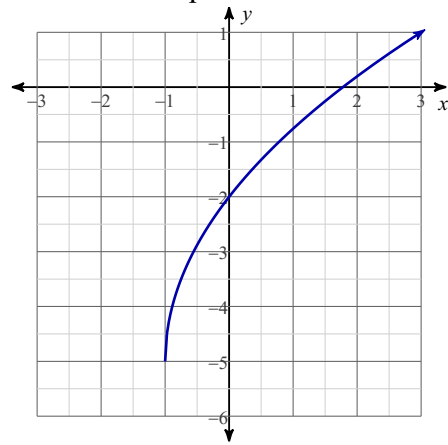
- 6) What is the equation for the graph?



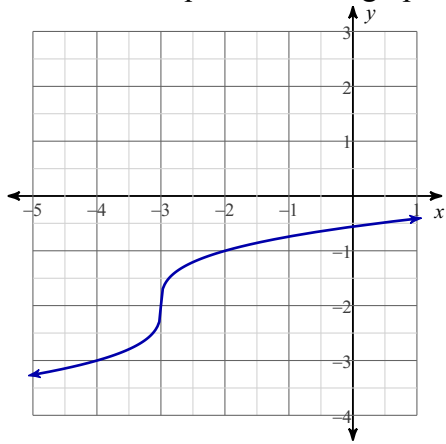
7) What is the equation?



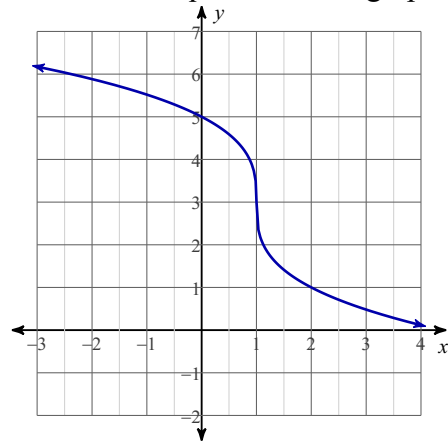
8) What is the equation?



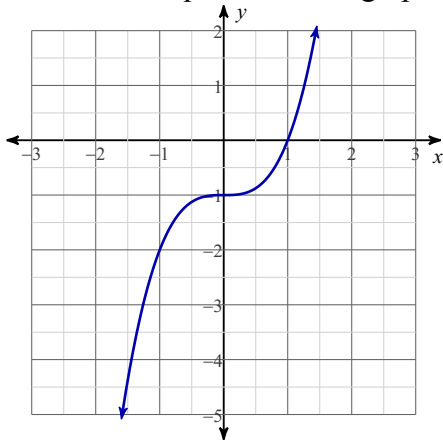
9) What is the equation of the graph?



10) What is the equation of the graph?



11) What is the equation of the graph?



12) What is the equation of the graph?

